



In This Issue

- 1 ... How is Elachee Doing?
- 1 ... Enroll Your Preschooler in Nature School
- 2 ... Ledbetter Point Found during Camp Elachee
- 2 ... Hiking for Health: 150-Mile Chicopee Challenge
- 2 ... Partner with Elachee in 2021
- 2 ... 10th Annual Trillium Trek Trail Run & Walk
- 3 ... Elachee's School Program Options for 2020-21
- 4 ... Welcoming a Great Horned Owl Home
- 4 ... Slowly Resuming Saturday Programming
- 4 ... Elachee VIRTUAL Science Nights' 2020 Topics
- 4 ... Membership Supports Elachee's Efforts

Nature Mixed In

Quarterly News from Elachee Nature Science Center • August 2020

How is Elachee Doing?

Every day I am asked, "How is Elachee doing?" Well, I am pleased to report the Elachee organization is adjusting, planning and preparing. Yes, we have our challenges. But with the combination of **your support**, tremendous Board of Trustees' leadership and efforts of Elachee's talented, committed and creative staff, we are moving forward. We are finding new opportunities and working amidst shifting sands to continue providing the valuable learning experiences which you have come to expect and appreciate.



Andrea Timponi
Elachee President/CEO

"Exuberant" is the term we used to describe the feeling from parents, children and staff thrilled to be outdoors sharing healthy and fun traditional Camp Elachee experiences. A total of 281 campers joined us for a shortened but successful five weeks of summer day camp. In mid-August we will welcome over 40 Elachee Nature Academy Preschool and Kindergarten-1st Grade students to begin their 2020-21 school year. These students, ages 3 to 7 years, will be immersed in outdoor classroom and experiential learning experiences in the incredible Chicopee Woods.

Our education and naturalist staff have made the most of the 'quiet' spring and summer months. They have created an *Interactive Distance Learning* format for a selection of Elachee's most requested school programs. This alternative program option will provide PreK-12 students access to ecology and nature lessons if field trips to Elachee and/or *Elachee in Your Classroom* outreach programs are curtailed the first few months of the 2020-21 school year. This new format combines online lessons and live virtual discussions with Elachee instructors. We look forward to providing these varied programming options to teachers, classes and other groups throughout our north Georgia region.

And yes, we continue to welcome visitors and hikers to Elachee and the Nature Preserve. Visit www.elachee.org for dates and details about Saturday Live Animal Showcases, Trillium Trek and virtual monthly Science Nights. We hope you will make an Elachee connection sometime soon and can appreciate the wonderful opportunities that we and our beautiful region have to offer in safe outdoor experiences.

So, the answer I give is a resounding, **"YES, thanks to you, Elachee is doing well!"**

P.S. Now, more than ever, Elachee needs your financial support through Memberships, Donations, booking School Programs and Sponsorships.
Visit elachee.org/wish-list for ways to help.

Stay well,

Andrea



Elachee Nature Academy PRESCHOOL LIMITED SPOTS FOR 2020-21

Giving Parents an Innovative
'Nature School' Choice for
Their Young Children

Key Advantages

- Our educational philosophy promotes a nature-based learning environment.
- Inquiry-based curriculum meets Georgia learning standards.
- Accredited by SACS/Cognia and licensed by Bright from the Start.
- Small class sizes allow for personalized instruction.
- Students benefit from at least 3 hours of guided outdoor instruction, representing 50% or more of each school day!

www.ElacheeNatureAcademy.org



**Call 770-535-1976 to
schedule a tour.**

October 3, 2020

PRESENTED BY

NORTHSIDE
HOSPITAL

Trillium Trek

Trail Run & Walk HALF-MARATHON
5K RUN/WALK



EVENT SPONSORS



Proceeds from this seasonal public program benefit Elachee's environmental education and conservation initiatives in south Hall County's 1,440-acre Chicopee Woods Nature Preserve. This urban forest is one of Georgia's largest protected green spaces. Elachee receives no local, state or federal funding to design, manage and maintain the 8-mile hiking trail system, relying instead on private donations, Elachee memberships, grant awards and volunteer efforts to perform these functions. **RACE DETAILS:** elachee.org/trillium-trek



Partner with Elachee Become an Elachee 2021 Sponsor

With a single investment, Elachee offers an effective way to leverage your marketing or community outreach budget, or to simply support Elachee. Sponsorships are a visible demonstration that you, your business or organization have a commitment to improve quality of life in the communities where you live, play and work. See the annual and seasonal a la carte sponsorships online.

2021 SPONSORSHIPS: elachee.org/support

Hiking for Health 150-Mile Chicopee Challenge

Ready to stretch your legs on a regular basis toward the goal of hiking 150 miles in the Chicopee Woods? Just as Fred and Olivia Skey did, receive a limited edition t-shirt after 'crossing' the finish line.

"Our hikes on Elachee's beautiful trails have been, for us, the silver lining in this pandemic cloud," wrote Olivia Skey. They completed their 150 miles on May 1, seven months ahead of their goal.

READ MORE and DOWNLOAD HIKING LOG:
elachee.org/obliterating-the-finish-line

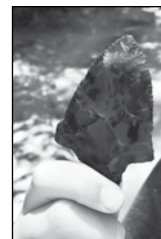


Look What Lucas Found!

Imagine splashing in the shallows during a Camp Elachee creek day and there sits an arrowhead. Thanks to Lucas Rhoads, on July 9, 2020, Elachee's cultural history collection gained an impressive specimen!

This 6-year-old Elachee Nature Academy student found a Ledbetter projectile point. Because artifacts may not be removed from the Chicopee Woods Nature Preserve, Elachee Nature Science Center recognized his remarkable archeological discovery with a framed certificate and naming rights to his find – the *Lucas Rhoads Point*.

Elachee friend and artifacts expert Doc Johnson examined the Native American find and made an identification based upon the point's characteristics.



"Ledbetter projectile points are distinctive because of the asymmetry of the shape and the many ways they were used," Johnson conveyed to Education Director Peter

Gordon. These are thought to be from the Late Archaic to Early Woodland cultural period and the Neoglacial glacial period.

In Johnson's opinion, "On a scale of 1 to 10, this point would be [ranked] an 8; it is very high quality. This particular point may have been used as a spear point, arrow point or Atlatl dart point. It also could be removed from the spear or arrow shaft and used as a scraper or knife," Johnson said.

READ FULL ARTICLE: elachee.org/ledbetter-point-found-during-camp-elachee-2020

School Programs

STEAM-based Environmental Education Classes

2020-2021



GRADE-SPECIFIC TOPICS and FORMATS

FIELD TRIP TO ELACHEE	DISTANCE LEARNING	OUTREACH IN CLASSROOM	FIELD TRIP TO LAKE LANIER
-----------------------	-------------------	-----------------------	---------------------------

PROGRAMS for PreK•Kindergarten•1ST Grade

PROGRAM TOPIC: <i>A Sense of Wonder</i>	X			
PROGRAM TOPIC: <i>Green and Growing</i>	X		X	
PROGRAM TOPIC: <i>Wheel of Animals</i>	X	X	X	
PROGRAM TOPIC: <i>Seeing Stars for Kindergarten</i>		X		

PROGRAMS for Grades 2 and 3

PROGRAM TOPIC: <i>Elachee Rocks!</i>	X		X	
PROGRAM TOPIC: <i>Habitat is Home</i>	X	X	X	
PROGRAM TOPIC: <i>Lessons from the Cherokee</i>	X	X	X	
PROGRAM TOPIC: <i>Life Cycles</i>	X		X	
PROGRAM TOPIC: <i>Pond Life</i>	X			
PROGRAM TOPIC: <i>Seeing Stars for 2nd Grade</i>		X		

PROGRAMS for Grades 4 and 5

PROGRAM TOPIC: <i>Eat or Be Eaten</i>	X	X	X	
PROGRAM TOPIC: <i>Exploring the Animal Kingdom</i>	X		X	
PROGRAM TOPIC: <i>Lake Lanier Aquatic Studies (LLALC)*</i>				X
PROGRAM TOPIC: <i>Pond Life</i>	X			
PROGRAM TOPIC: <i>Seeing Stars for 4th Grade</i>		X		
PROGRAM TOPIC: <i>Stream Life</i>	X	X		
PROGRAM TOPIC: <i>We All Live Downstream</i>	X	X	X	

PROGRAMS for Grades 6, 7 and 8

PROGRAM TOPIC: <i>All About Energy</i>	X		X	
PROGRAM TOPIC: <i>Astronomy for Middle Schoolers</i>		X		
PROGRAM TOPIC: <i>Elachee Rocks!</i>	X		X	
PROGRAM TOPIC: <i>Energy Options</i>	X		X	
PROGRAM TOPIC: <i>Habitats and Adaptations</i>	X	X	X	
PROGRAM TOPIC: <i>Lake Lanier Aquatic Study (LLALC)*</i>				X
PROGRAM TOPIC: <i>Lake Lanier Water Quality Index (LLALC)*</i>				X
PROGRAM TOPIC: <i>Stream Life</i>	X	X		
PROGRAM TOPIC: <i>Telescopes to Go!</i>			X	
PROGRAM TOPIC: <i>TREE-mendous Trees</i>	X		X	
PROGRAM TOPIC: <i>We All Live Downstream</i>	X	X	X	

PROGRAMS for Grades 9–12

PROGRAM TOPIC: <i>Stream Life</i>	X	X		
PROGRAM TOPIC: <i>Lake Lanier Aquatic Study (LLALC)*</i>				X
PROGRAM TOPIC: <i>Lake Lanier Water Quality Index (LLALC)*</i>				X

Schedule an Elachee Field Trip, Elachee in Your Classroom outreach or Interactive Distance Learning program.

VISIT elachee.org/school-programs to:

- View program descriptions and grade-specific GSE and AKS correlation,
- See program rates, and then
- Submit an online program request form.

**The Lake Lanier Aquatic Learning Center (LLALC) programs take place at River Forks Park in Gainesville, Ga. Elachee Nature Science Center conducts these programs in partnership with Chattahoochee Riverkeeper and the Hall County Parks and Leisure Services.*





Back to Normal

Elachee Resumes Saturday Programs

Elachee is starting to resume its regular operations. The Nature Center exhibits and Nature Shop are open Thursday–Saturday, plus weekend programs have returned!

With paid admission, visitors may enjoy a live animal showcase program on Saturdays at 11 a.m. and 1 p.m., led by an Elachee Naturalist. elachee.org/plan-your-visit

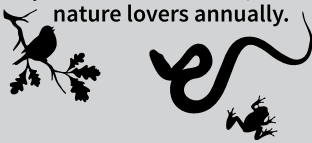
Elachee is booking children's birthday parties through November 2020, offering three new outdoor-friendly program themes, along with other favorites. Act quickly to reserve an available Saturday afternoon. elachee.org/birthdays

Membership Supports Elachee's Efforts...

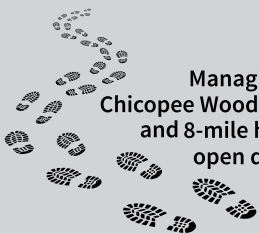
Educating more than 33,000 students each year.



Providing unique ecology exhibits, programs and experiences for over 70,000 nature lovers annually.



Managing the 1,440-acre Chicopee Woods Nature Preserve and 8-mile hiking trail system open daily to the public.



Elachee memberships are integral to our sustainability. Support Elachee through an annual membership or make a \$500 gift to Elachee's Annual Fund to become a Patron Member. **JOIN TODAY:** elachee.org/membership

Hoo-hoo's That?

Elachee Welcomes New Winged Ambassador to the Nature Center

In July, Elachee added a **Great Horned Owl** (*Bufo virginianus*) to the live animal exhibit, welcoming the non-releasable bird of prey to the campus. This male owl called Georgia DNR's Charlie Elliott Wildlife Center home for seven years, after being rehabilitated from an injury in 2013. Blind in one eye, this friendly fellow is settling into his new home in Elachee's outdoor aviary. The Elachee team is hard at work enhancing the habitat. This includes adding new enrichment activities and establishing his feeding schedule.

Elachee friends and the community at large were dismayed and outraged when the Nature Center's aviary was vandalized in April. The consequence of that unlawful act resulted in the resident, and blind in one eye, Red-tailed Hawk leaving the aviary. Yet to be found, the hope is she has adapted to her limitations and is surviving in the area.

This newest resident to the Nature Center's live animal exhibit was originally injured in an auto accident, severely damaging his left eye. DNR Wildlife Specialist Berkeley Boone explained, "The [owl's] eyeball itself is intact, but has rotated inward toward his beak,



Peter Gordon shares insight about the Great Horned Owl.

about 90 degrees or so. He was deemed non-releasable because the eye trauma affects his depth perception and therefore his ability to fly and hunt successfully."

Lessons from the Great Horned Owl

As the largest owl in Georgia, this legendary predator uses its incredible eyesight and sensitive hearing to hunt, and uses its soft flight feathers and powerful talons to catch up to 500 different species that share its native habitat. The Great Horned Owl is

found in every Georgia county, making the raptor's presence at the Nature Center an invaluable tool to teach visitors about prey-predator relationships in the wild.

"Having this bird on display for Elachee visitors is a great way to show them species that they can see in their backyards and neighborhoods, particularly ones that they may hear but not have gotten to see in person," said Boone.

The Great Horned Owl, like all raptors, is federally protected by the Migratory Bird Treaty Act of 1918. The Elachee team has taken additional security steps to ensure the raptor's well-being. The release of *this* Great Horned Owl would likely be a death sentence since the bird's blindness prevents him from being able to fly or hunt effectively.

"The owl is truly an outstanding addition to the Nature Center. His wide variety of adaptations should be tremendously popular with visitors," shared Peter Gordon, Elachee Education Director. **READ FULL STORY:** elachee.org/hoo-hoos-that



Non-releasable Great Horned Owl settling in at Elachee.

Join Elachee's Monthly VIRTUAL Science Night Series

Pre-register for the free ZOOM Meeting programs. **DETAILS:** elachee.org/lifelong-learning

- **Sep. 1** – *Georgia Snakes: Lessons in Color Coordination*, with guest speaker Carlos Camp
- **Oct. 6** – *How to Be a Better Birder*, with guest speaker Georgann Schmalz
- **Nov. 3** – *Exploring Botany and Fungi*, with guest speaker Tom Diggs
- **Dec. 1** – *Brevard Fault in the Chicopee Woods*, with guest speakers Katayoun Mobasher and Jerry Allison