



Elachee Nature Science Center

In the Chicopee Woods Nature Preserve

The only SACS-Accredited Nature Center in the Southeast



Environmental Education Programs for
Pre-K, Elementary, Middle and
High School Students

2011-2012

2125 Elachee Drive
Gainesville, GA 30504
(770) 535-1976
www.elachee.org



Welcome to Elachee Nature Science Center's "Education Program Guide" for 2011 – 2012!

Elachee Nature Science Center, the southeast's only SACS-accredited nature center, is pleased to present our innovative and exciting environmental education-based curriculum for 2011-12 to you and your students. Each Elachee class is correlated with both the *Georgia Performance Standards (GPS)* and *Gwinnett County School's Academic Knowledge and Skills (AKS)*. All are characterized by hands-on learning opportunities, professional, enthusiastic instruction and interactions with the plants, animals and natural systems of the Chicopee Woods Nature Preserve.

Classes can take place at Elachee, the Chicopee Woods Aquatic Study Center, Aqualand Marina on Lake Lanier, Elachee's Mountain Education Center near Clayton, GA or at your school.

Elachee Nature Science Center's mission is to promote environmental understanding through education and conservation.



ELACHEE



Pre-K, K & 1st Grade

Wheel of Animals – New

Explore the basic needs of animals in the classroom and on the trail and then spin our special wheel to discover fascinating facts about some unique and amazing animals. GPS: S1L1B, S1L2B, S1L1D, AKS: 1SC_D12b, d

A Sense of Wonder

Discover how animals use their senses on this exploratory hike through the Chicopee Woods. GPS: SKL1 & 2, SKP1, S1L1 AKS: KC_8, 9, 10, 11, 1C_12, 13

Sorting It Out

Learn to classify animals in the classroom and on the trails of the Chicopee Woods. GPS: SKL1&2, SKCS1, 2 & 5, 1L1 AKS: KSC_B-7, C-8, 11

Green and Growing

Budding botanists are introduced to the plant kingdom in this interactive program for young learners. GPS: SKE1 & 2 SKL1 & 2, AKS: KSC_C-8, 9 & 10

Seeing Stars - Kindergarten

An introduction to day and night, the sun, moon and stars in our portable planetarium, *Starlab*. GPS: SKE1, AKS: KSC_D-12

We All Need Plants

The Chicopee Woods is a great place to study plants, their many uses and unique characteristics. GPS: S1CS6 & 7, S1L1, AKS: 1SC-C-12

2nd & 3rd Grades

We All Need Plants

The Chicopee Woods is a great place to study plants, their many uses and unique characteristics. GPS: S1CS6 & 7, S1L1, S2E3, 2L1, AKS: 1SC-C-12, 2SC-14, 15 & 16

Seeing Stars – 2nd Grade

Study the size and brightness of stars, constellations, the seasons, moon phases and more in the cozy confines of our portable planetarium, *Starlab*. GPS: 2E1 & 2, AKS: 2SC_B-11, 12 & 13

Lessons from the Cherokee

Explore the culture, contributions and history of north Georgia's most important Native American tribe. GPS: S2L1, SS2H2, 2G1 & 2, AKS: 2SC_14 & 15, 2SS_E-5

“Back Country” Hike – New

Join our skilled and experienced staff on a 2 or 3-hour fun and educational trek along the back trails of the Chicopee Woods Nature Preserve. We'll design an outdoor experience for your students that will more than meet your instructional objectives. 60 student maximum. GPS & AKS: Based on teacher program selection.

Dry Scales and Slimy Skin

Compare and contrast the characteristics and life cycles of reptiles and amphibians. GPS: S2L1, S3L1 & 2, AKS: 2SC_C-14 & 16, 3SC_B-9 & 11

Birds of a Feather

An introduction to birds and bird ecology at Elachee and along the trails of the Chicopee Woods. GPS: S2L, S3L1 & 2, AKS: 2 SC_C-16, 3SC_B-11

Elachee Rocks

Enjoy a non-stop, hands-on investigation of the rocks and minerals of Georgia. GPS: S3E1 & 2, AKS: 3SC_C-13

Lake Lanier Aquatic Study

Explore and analyze Georgia's most important lake from the deck of the *Chota Princess II* catamaran. GPS: S3L1 & 2, AKS: 3SC_B-6, C-14 & D-19

Habitat is Home

Delve into Georgia's major habitats and the characteristics of the plants and animals that live in each. GPS: S3L1 & 2, AKS: 3SC_B-6, 10 & 12

Wild Georgia Math – 3rd Grade

Explore the characteristics of native Georgia plants, animals and habitats through mathematical problem solving in the classroom and along the trails at Elachee. Hall County Schools will utilize Singapore Math techniques. GPS: Math: 3N2, 3N3, 3N4, 3N5, 3M2, 3M3, 3M4, 3P1; Science: 3CS3, 3L1
AKS: Math: 3MA_B-23, B-25, B-28, B-31, B-33, B-39, C-41, C-44, D-47, D-52, D-55; Science: 3SC_D-12

PROGRAMS



4th & 5th Grades

We All Live Downstream – New

Combine a community watershed outreach program at your school with our popular Lake Lanier Aquatic Studies program. GPS: S6E3, 4, 5 & 6, S7L1, S7L4 AKS: 6SC_C14, E17c, E17c1, G19 7SC-B10, 11, 12 & 13, F19 8SC_C13

“My Side of Elachee” – New

Hike the trails of the Chicopee Woods and develop some of the same skills and knowledge that help young Sam, the main character in *My Side of the Mountain*, survive his time in the wilderness. GPS: S5L1, 2 & 3, S5P2 AKS: 5SC_B8b&c, D14a

“Back Country” Hike – New

Join our skilled and experienced staff on a 2 or 3-hour fun and educational trek along the back trails of the Chicopee Woods Nature Preserve. We'll design an outdoor experience for your students that will more than meet your instructional objectives. 60 student maximum. GPS & AKS: Based on teacher program selection.

Fungus Among Us

Explore the rich and rotten world of fungi and lichens in the Chicopee Woods. GPS: S4L1 & 2, AKS: 4SC_B-7

Habitats & Adaptations

Study the behavioral and structural ways plants and animals interact with their habitats. GPS: S4L1 & 2, AKS: 4SC_B-7

Seeing Stars – 4th Grade

Study the physical attributes of planets and stars, the earth, solar system and moon phases in *Starlab*, our portable planetarium. GPS: S4E1 & 2, AKS: 4SC_C-9 & 10

Into the Woods

Explore the stream, plant, animal and soil communities of the Chicopee Woods. GPS: S4E3, S4L1 & 2, AKS: 4SC_A-3, B-9, C-12 & 13

Pond Life

Sample and identify the rich animal diversity of Chicopee Lake. GPS: S4L1 & 2, 5L1, AKS: 4SC_A-2 & 5, B-7 & 8, C-12 & 13, 5SC_A-2, B-4, 7 & 9

Stream Life

Use nets to sample animal life and then chemically evaluate this cool and flowing habitat. GPS: S4L1 & 2, 4E3, AKS: 4SC_A-5

Exploring the Animal Kingdom

Classroom and trail activities help students classify vertebrate animals. GPS: S4L1 & 2, 5L1, AKS: 4SC_B-17, 5SC_B-7 & 9

No Bones About It

Survey the remarkable array of animals that make up the invertebrate phyla. GPS: S5L1 & 4, AKS: 5SC_B-7 & 9

River of Words

Explore the creeks and streams of the Chicopee Woods, playfully recreate the water cycle and learn some writing techniques to describe your experiences and impressions. GPS: S4E4, S4L1, S5E1, S5L1, 4LSV1, 4W1, 5W1, 5LSV1, AKS: 5SC_B-9, C-13, 5LA_D-37

Orienteering I & II

Learn to navigate a trail in the Chicopee Woods with compasses, topographical maps and Global Positioning System (GPS) hand-held devices (Orienteering II only). GPS: M4G1, M4M2, M5N3, SS5G2, S5E1, 5CS4, AKS: 4SS_A-1, 3, 4, 5, & 6, 5SS_A-1, 2, 3 & 5

Weather Alert

Delve into the water cycle, air pressure systems, humidity, complex and simple weather instruments and more. GPS: S4E3 & 4, AKS: 4SC_C-10, 12, & 13

Tremendous Trees

Learn to use a dichotomous key to identify a variety of trees of the Chicopee Woods. GPS: S5L1 & 2, AKS: 5SC_B-4, 7 & 9

Wild Georgia Math – 5th Grade – New

Estimate, measure, calculate and use problem-solving skills to explore the mathematical nature of the animal kingdom along the trails of Elachee and in the classroom. Hall County Schools will utilize Singapore Math techniques. GPS: Math: 5N2, 5N3, 5N4, 5N5, 5M1, 5M2, 5M4, 5G1, 5G2, 5D1, 5D2, 5P1, 5P4; Science: 5L1, AKS: Math: 5MA_A2009-3, 16; B2009-ALL; C2009-40, 41; D2009-ALL; F2009-ALL; Science: 5SC_D2006-12

Lake Lanier Aquatic Study

Analyze and explore Georgia's most important lake from the deck of the *Chota Princess II* floating classroom. GPS: S4L1 & 2, AKS: 4SC_B-7, C-12 & 13

ELACHEE



Middle School – Grades 6-8

“My Side of Elachee” – New

Hike the trails of the Chicopee Woods and develop some of the same skills and knowledge that help young Sam, the main character in *My Side of the Mountain*, survive his time in the wilderness.

GPS: S6E4, S6E6, S7L4, S8P2, S8P3, S8P5 AKS: 6SC_C14, E17c, E17c1, G19 7SC-B10, 11, 12 & 13, F19 8SC_C13

“Back Country” Hike – New

Join our skilled and experienced staff on a 2 or 3-hour fun and educational trek along the back trails of the Chicopee Woods Nature Preserve. We'll design an outdoor experience for your students that will more than meet your instructional objectives. 60 student maximum. GPS & AKS: Based on teacher program selection.

We All Live Downstream – New

Combine a community watershed outreach program at your school with our popular Lake Lanier Aquatic Studies program. GPS: S6E3, 4, 5 & 6, S7L1, S7L4 AKS: 6SC_C14, E17c, E17c1, G19 7SC-B10, 11, 12 & 13, F19 8SC_C13 High School

All About Energy

Hands-on explorations, solar ovens, calorie counting and H2O bottle rockets help us compare the different forms of energy. GPS: S8P2 & 4, AKS: 8SC_B-12. Great as a traveling program.

Astronomy for Middle Schoolers

Relative position of planets, the solar system, solar and lunar eclipses, phases of the moon and more inside *Starlab*, our portable planetarium. GPS: S6E1 & 2, AKS: 6SC_B-10, 11, 12 & 13, 8SC_B-16, 17, 18, 19 & 20

Elachee Rocks!

Study plate tectonics, the rock cycle, rock formations, fossils, erosion, deposition and more. GPS: S6EF, AKS: 6SC_E-16 & 17, 8SC_B-7, 8, 9, 10 & 11

Telescopes to Go

Our expert astronomers will bring up to 8 telescopes to your school to conduct an unforgettable celestial tour of the evening sky. GPS: S6E1 & 2, AKS: 6SC_B-10, 11, 12 & 13, 8SC_B-16, 17, 18, 19 & 20

Weather Alert

Weather patterns, wind systems, air pressure, unequal heating of land and water combine with our new high-tech weather center to make for a unique learning experience. GPS: S6E2 & 4, AKS: 6SC_D-14, 15, 8SC_B-14 & 15

Habitats and Adaptations

Study the behavioral and structural ways plants and animals interact with their habitats. GPS: S7L4 & 5, AKS: 7SC_B-8, 9, 10, 12, & 13

Into the Woods

Explore the stream, plant, animal and soil communities of the Chicopee Woods. GPS: S7L1 & 4, AKS: 7SC_A-1 & 3, B-7, 8, 9, 10 & 14

Lake Lanier Aquatic Study

Analyze and explore Georgia's most important lake from the deck of the *Chota Princess II* floating classroom. GPS: S7L4, S7B4 & C7, AKS: 7SC_B-7, 8, 9, 12, & 14

Pond Life II

Collect and classify invertebrate and vertebrate animals and conduct chemical tests in order to evaluate Chicopee Lake. GPS: S7L1 & 4, AKS: 7SC_B-8, 9, 10, 12, 14 & 19

Stream Life

Use nets to sample animal life and then chemically evaluate this cool and flowing habitat. GPS: S7L1 & 4 AKS: 7SC_B-8, 9, 10, 12, 14, 19

Tremendous Trees

Learn to use a dichotomous key to identify a variety of trees of the Chicopee Woods. GPS: S7L1, 3, 4 & 5, AKS: 7SC_B-10, 11, & 13

High School – Grades 9-12

“Back Country” Hike – New

Join our skilled and experienced staff on a 2 or 3-hour fun and educational trek along the back trails of the Chicopee Woods Nature Preserve. We'll design an outdoor experience for your students that will more than meet your instructional objectives. 60 student maximum. GPS & AKS: Based on teacher program selection.

PROGRAMS



High School – Grades 9-12 (continued)

Telescopes to Go

Our expert astronomers will bring up to 8 telescopes to your school to conduct an unforgettable celestial tour of the evening sky. GPS: SPS 7 & 8, SP2, AKS: SCAS_B-4 – 20

Lake Lanier Aquatic Study

Analyze and explore Georgia's most important lake from the deck of the *Chota Princess II* floating classroom. GPS: B4, C7, AKS: SCES_B-6, 7, 8, 9 & 16, SCB1_A-3, B-7, 8 & 17

Pond Life II

Collect and classify invertebrate and vertebrate animals and conduct chemical tests in order to evaluate Chicopee Lake. GPS: SB4, SC7

Stream Life

Use nets to sample animal life and then chemically evaluate this cool and flowing habitat. GPS: SB4, SC7, AKS: SCES B-6, 7, 8, 9 & 16

Lake Lanier Aquatic Study

Sponsored by Elachee Nature Science Center, Upper Chattahoochee Riverkeeper, Aqualand Marina and the U.S. Army Corps of Engineers.



All aboard the *Chota Princess II* catamaran as we explore Lake Sidney Lanier, Georgia's most important reservoir. Sample plankton communities, collect sediments, conduct turbidity tests and determine pH and dissolved oxygen levels.

In-depth watershed activities including topographical map studies, storm water demonstrations, and water treatment plant simulations take place on shore.

Program options include a tour of the nearby Lakeside Water Treatment Facility or you can combine a study of your community watershed at your school with a *Chota Princess II* cruise as part of our exciting new "We All Live Downstream." Call us for details at (770) 535-1976. One of our most popular programs.

Overnight Programs at Elachee's Mountain Education Center

Join us for an unforgettable Blue Ridge Mountain educational adventure that is perfect for the class, scout troop or small group looking for a unique learning opportunity.

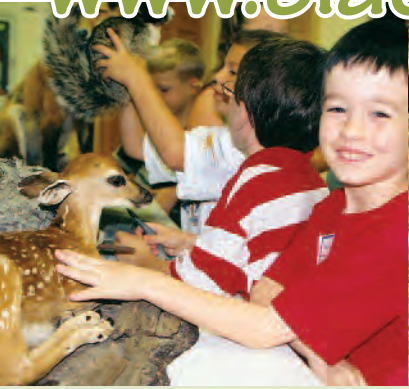


Elachee's Mountain Education Center and its beautiful forests, rushing streams, cascading waterfalls and abundant plant and animal life is located about 2 hours from metro Atlanta near Clayton, Georgia.

Choose classes from our SACS-accredited curriculum and construct a customized program that your students will never forget.

Call Elachee at (770) 535-1976 for details or to schedule this exciting addition to Georgia's best environmental education curriculum. **See page 7 for pricing information.**

A sample "Mountain Education Center" program: Stream Ecology, Wildflower Hike, Birding, Native American Culture, Astronomy, Orienteering and an interpretive hike to an amethyst mine.



“Elachee in Your Classroom” Outreach Programs

Transform your classroom, media center, gymnasium or outdoor classroom into an environmental learning site by scheduling an “Elachee in your Classroom” outreach program. Our talented and travel-tested staff will present a standards-based program of your choice that your students will love!

Some of our most popular “Elachee in Your Classroom” programs:

We All Need Plants

Astronomy for Middle Schoolers

Habitat is Home

All About Energy

Elachee Rocks

Tremendous Trees

Seeing Stars (Starlab Planetarium)

Wild Georgia Math

We All Live Downstream

Telescopes to Go

Habitats & Adaptations

Program Description

Class Size: Up to 30 students per session

Cost: \$125.00 per session for day programs; \$175.00 for evening programs (after 5pm); A minimum of two sessions is required.

Round-trip mileage from Elachee to your school is charged at a rate of \$.65 per mile.

If you don't see what you need, we will work with you to design a program that will exceed your expectations. Call us for details at (770) 535-1976.

Program Formats and Rates

2 hours Our most popular format. A classroom presentation and hike or, depending on the program, all outdoors. \$10-student, \$5-adult, \$125 minimum

3 hours A more intensive exploration of topic; an extended classroom presentation and hike or, depending on the program, all outdoors or two classroom presentations and a hike. Recommended for the Lake Lanier Aquatic Studies Program. \$13-student, \$5-adult, \$150 minimum

4 hours Combine two 2-hour programs with classroom presentations and hikes. \$15-student, \$5-adult, \$200 minimum

1 hour An interpretive hike or classroom program, \$6 per student, \$5 per adult, \$75 minimum

Self-guided Visit the museums, animal exhibits, and walk the trails, \$5 per adult, \$3 per student Please call to schedule.

“We All Live Downstream” includes a custom-designed outreach program and a 3-hour Lake Lanier Ecology program and cruise. \$16-student. \$300 minimum

“Elachee in Your Classroom” Outreach Weekdays - \$125 per 1-hour session (minimum 2 sessions) plus \$.65 per round-trip mile.

Evening Rate (after 5pm) \$175 per session (minimum 2 sessions) plus \$.65 per round trip mile

Overnight Programs at Elachee

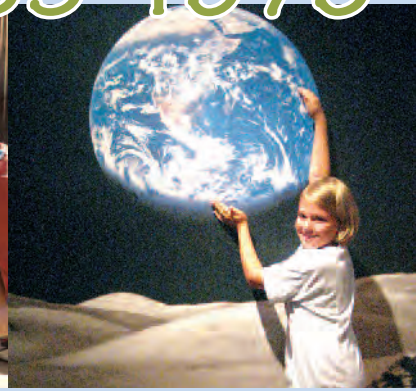
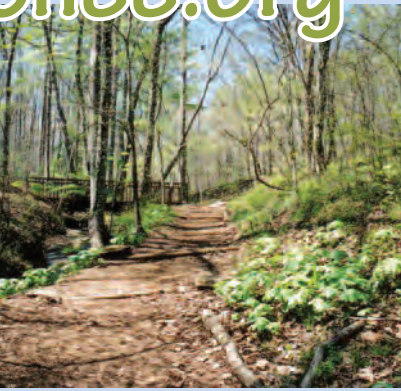
5 hours of instruction, breakfast and snack provided, \$45 - participant, \$600 minimum. \$5 per student for each additional hour of instruction.

Overnight at Elachee's Mountain Education Center – 11 hours of instruction, dinner, snack, breakfast and 2nd day lunch provided, \$90-participant, \$1,250 minimum. \$5 per student for each additional hour of instruction.

All programs scheduled at Elachee or Lake Lanier for our non-peak months of August, September, January or February receive a 15 % discount. The discount does not apply to outreach, evening or overnight programs.

Cancellation Policy

All programs take place rain or shine. An alternative curriculum is planned in the event of inclement weather. You may reschedule if space is available or cancel a program up to four weeks before your originally scheduled date without penalty. A payment of 50% of the program fee is charged for cancellations without at least four weeks notification.



“First Wednesday” Home School Series

- Aug 3 Georgia's Coast
- Sept 7 Navigating the Chicopee Woods
- Oct 5 Tremendous Trees at Thompson Mill (State Arboretum)
- Nov 1 Nocturnal Animals – a special Tuesday evening program!
- Dec 7 Dinosaurs and Fossils
- Jan 4 Super Science Sampler
- Feb 1 “My Side of Elachee” – (Wilderness Survival)
- March 7 “No Bones About It” – (Invertebrate Study)
- April 4 Lake Lanier Ecology – a special 3-hour program
- May 2 “Flying Wild” at Chicopee Lake (Bird Migration)

Junior Master Naturalist Home School Schedule

- Aug 3 Native American Culture
- Sept 7 Nature Journaling
- Oct 5 Tremendous Trees at Thompson Mill (State Arboretum)
- Nov 1 Telescopes – a special Tuesday evening program
- Dec 7 “My Side of Elachee” – (Wilderness Survival)
- Jan 4 All About Energy
- Feb 1 Orienteering and Geocaching
- March 7 Adopt –A- Stream Training
- April 4 Lake Lanier Ecology – a special 3-hour program
- May 2 Exploring Redwine Creek

What Teachers are Saying About Elachee’s Programs:

“Instructors were wonderful. They kept the students engaged with hands-on participation. Students, as well as parents and teachers, enjoyed the program.”

Cumming Elementary, Forsyth County Schools

“I love coming to Elachee because you guys are always prepared and organized . . . everything is always smooth.”

Riverbend Elementary, Hall County Schools

“It was wonderful. My students were engaged and kept talking about it after the program was over.”

Jackson Elementary, Gwinnett County Schools

“I’ve been coming to Elachee for years . . . this program by far was the best. It was aligned with standards, the staff was focused and the experience was wonderful.”

Martin Elementary, Hall County Schools

“The program was awesome. (Your instructor) had the students’ attention the whole time with hands-on activities for them to learn about plants and seeds.

Gainesville Elementary, Gainesville City Schools

“My intent is not to give you a big head, but to genuinely thank you and your staff for all you do augment and enhance the quality of education of our students. It’s real world, hands-on/brains-on education and I’ve had several chances to refer back to statements your staff made to enforce new concepts. Keep up the great work! You guys rock!”

Centennial High School, Fulton County Schools

